



daltile®



PICTURED: FLORENTINE  
MARFIL - FL07  
GLAZED PORCELAIN

excel  
HOMES



# daltile®

## about us

Bring any vision to life with DalTile's astounding selection of products and solid commitment to the highest quality. DalTile is committed to doing things in a way that can only be defined as the best in its class. As the country's leading manufacturer and distributor of ceramic tile and natural stone, our vast resources allow us to be a true single source supplier for the flooring industry and our amazing palette of products makes us a convenient and knowledgeable choice for any design.

[www.daltile.com](http://www.daltile.com)



### **Environmental Leadership that Works**

DalTile stands for beautiful design in every way possible. Because we believe the best design includes consideration for the environment, we have introduced Greenworks™ - our philosophies and operating practices that are reducing our impact on this earth. DalTile Greenworks is more than just a compilation of our sustainability programs – it's a company-wide philosophy, a commitment to help you design sustainable projects – without compromising your artistic vision.

With DalTile products, great design needn't be sacrificed in order to protect the remarkable designs nature has provided for our inspiration. Whether you're a designer or a homeowner working on your own, our site gives you the tools you need to promote and create sustainable design.

[daltilegreenworks.com](http://daltilegreenworks.com)

800. 933. TILE



## Glazed Ceramic Wall/Floor Tile - Emblem (7x20)



BEIGE - EM01

Suggested Grout: 386 Oyster Gray



GRAY - EM03

Suggested Grout: 335 Winter Gray



BROWN - EM04

Suggested Grout: 40 Truffle



PICTURED: BROWN 7X20

Tile Size: 7" x 20" \*

Tile thickness: 5/16"

Typical Grout Joint: 3/16"

Typical Application: Interior Floor (dry & wet)/Wall/  
Backsplash/Countertop

\* when installing in a staggered brick joint pattern overlap  
should not exceed 33% .

# Glazed Porcelain Floor Tile - Slate Attaché (12x24 / 2x2)



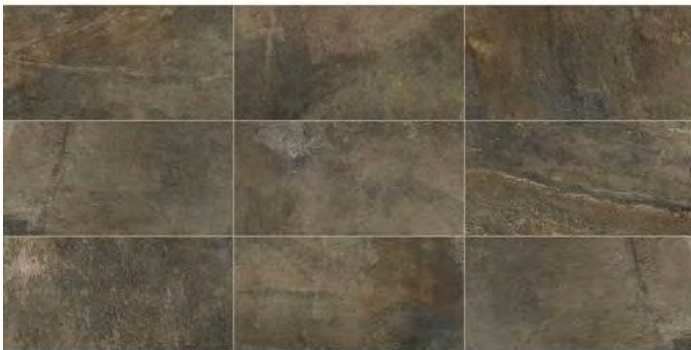
META BEIGE - SA05

Suggested Grout: 381 Bright White



MULTI GREEN - SA09

Suggested Grout: 335 Winter Gray



MULTI BROWN - SA08

Suggested Grout: 172 Urban Putty

Tile Size:	12" x 24" *	2" x 2"
Tile thickness:	3/8"	1/4"
Typical Grout Joint:	3/16"	1/8"
Typical Application:	Interior Floor (dry & wet)/Wall/ Backsplash/Countertop	
* when installing in a staggered brick joint pattern overlap should not exceed 33% .		



## Paver Wall Tile - Brickwork (4x8)



PATIO - BW03

Suggested Grout: 381 Light Smoke



TERRACE - BW05

Suggested Grout: 40 Truffle



PICTURED: TERRACE 4X8

Tile Size:	4" x 8"
Tile thickness:	7/16"
Typical Grout Joint:	3/8"
Typical Application:	Interior Floor (dry & wet)/Wall/ Backsplash/Countertop
Bullnose	not available

# Glazed Porcelain Floor/Wall Tile - Florentine (12x24 12x12 2x4)



CARRARA—FL06

Suggested Grout: 381 Bright White



MARFIL—FL07

Suggested Grout: 172 Urban Putty



ARGENTO—FL08

Suggested Grout: 386 Oyster Gray



NOCIOLLA—FL09

Suggested Grout: 386 Oyster Gray

Tile Size:	12" x 12"	12" x 24" *	2" x 4"
Tile thickness:	3/8"	3/8"	3/8"
Typical Grout Joint:	1/8"	1/8"	1/8"
Typical Application:	Interior Floor (dry & wet)/Wall/ Backsplash/Countertop		
* when installing in a staggered brick joint pattern overlap should not exceed 33% with 3/16" grout			

## Porcelain Floor Tile - Fabrique (12x24 / 12x12 / 2x2)



BRUN LINEN P691

Suggested Grout: 40 Truffle



CRÈME LINEN P686

Suggest Grout: 386 Oyster Gray



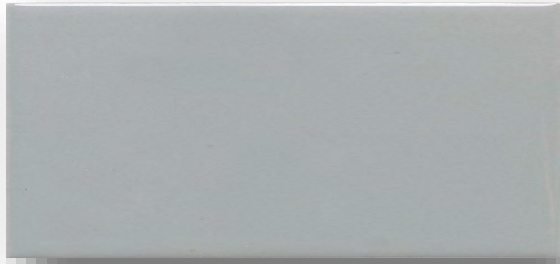
GRIS LINEN P690

Suggested Grout: 386 Oyster Gray

Tile Size:	12" x 12"	12" x 24" *	2" x 2"
Tile thickness:	3/8"	3/8"	3/8"
Typical Grout Joint:	1/8"	1/8" **	1/8"
Typical Application:	Interior Floor (dry & wet)/Wall/ Backsplash/Countertop		
* when installing in a staggered brick joint pattern overlap should not exceed 33% ** with 3/16" grout			



## Glazed Ceramic Subway Tile (3x6)



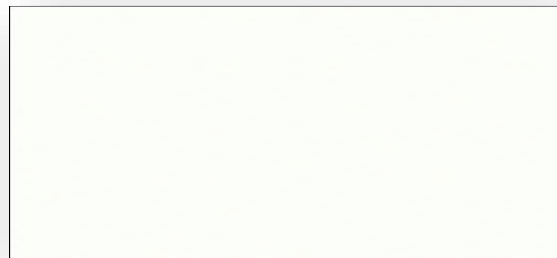
DESERT GREY X114 GLOSS (MATTE X714)

Suggested Grout: 381 Bright White



URBAN PUTTY 161 GLOSS (MATTE 761)

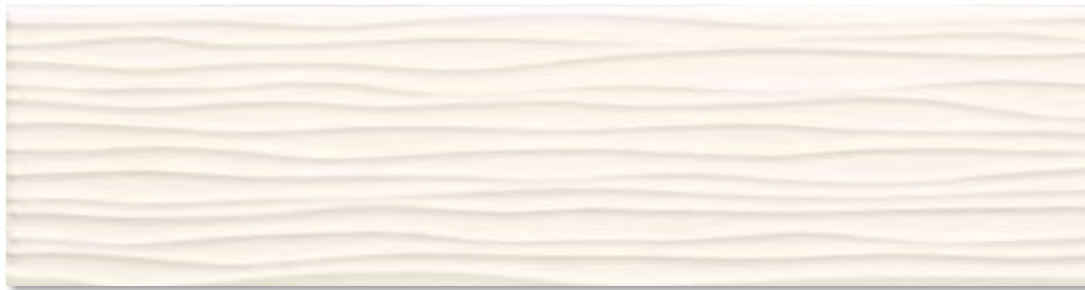
Suggested Grout: 381 Bright White



ARCTIC WHITE 190 GLOSS (MATTE 790)

Suggested Grout: 165 Deloran Gray

Tile Size:	3" x 6"
Tile thickness:	5/16"
Typical Grout Joint:	1/16"
Typical Application:	Wall/Backsplash/Countertop



MODERN DIMENSIONS WAVE  
ARTIC WHITE 0190

Tile Size:	4 1/4" x 12 3/4"
Tile thickness:	5/16"
Typical Grout Joint:	1/16"
Typical Application:	Wall/Backsplash



## Memoir Wall/Floor Tile (12x12)



ME20 Petal Gray

Suggested Grout: 381 Bright White



ME21 Petal Black

Suggested Grout: 381 Bright White

## Floor/Wall Tile Iron Craft 12x24



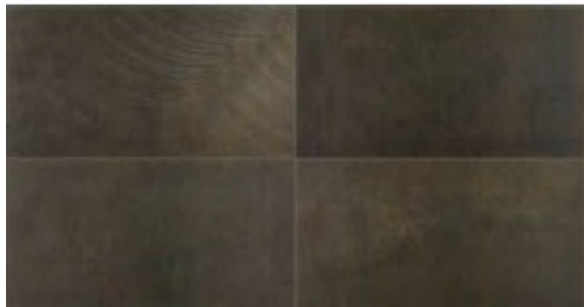
IC11— PHOSPHOR WHITE

Suggested Grout: 381 Bright White



IC13—CHARCOAL GREY

Suggested Grout: 335 Winter Gray



IC15—SABLE BLACK

Suggested Grout: 335 Winter Gray



IC17—GREY BLACK

Suggested Grout: 381 Bright White

Tile Size: 7" x 20" \*

Tile thickness: 5/16"

Typical Grout Joint: 3/16"

Typical Application: Interior Floor (dry & wet)/Wall/  
Backsplash/Countertop

\* when installing in a staggered brick joint pattern overlap



## Glass Mosaic (1x4)



ZEBO - AG04



TRITON - AG01



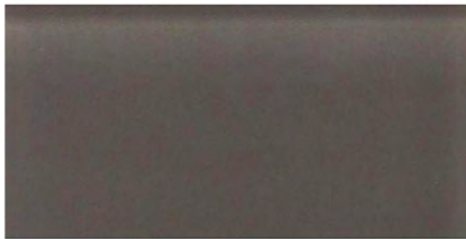
GALATEA - AG03

Suggested Grout: 381 Bright White

Tile Size:	1" x 4" Staggered
Tile thickness:	5/16"
Typical Grout Joint:	1/8" Approximately
Typical Application:	Wall/Backsplash
Bullnose	not available



## Glass Wall Mosaic (3x6)



Actual Color



KINETIC KHAKI CW09

Suggested Grout: 386 Daloran Gray



Actual Color



SUEDE SHOES CW10

Suggested Grout: 172 Urban Putty



Actual Color



ROOT BEER CW11

Suggested Grout: Linen



Actual Color



TANGO TAN CW06

Suggested Grout: 382 Bone



Actual Color



TOP HAT CW18

Suggested Grout: 381 Bright White



MIDNIGHT BLACK CW20

Suggested Grout: 381 Bright White

Tile Size:	3" x 6"
Tile thickness:	5/16"
Typical Grout Joint:	1/8" Approximately
Typical Application:	Wall/Backsplash
Bullnose	not available

# Grout



## Standard Grout Options



#540 Truffle



#19 Pewter



#335 Winter Gray



#165 Delorean Gray



#386 Oyster Gray



#145 Light Smoke



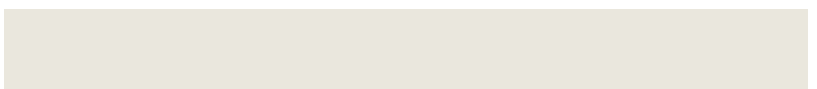
#122 Linen



#172 Urban Putty

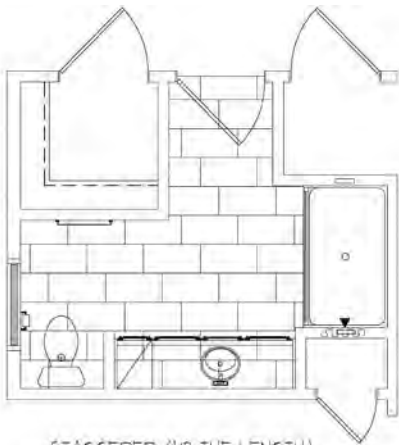


#352 Bone

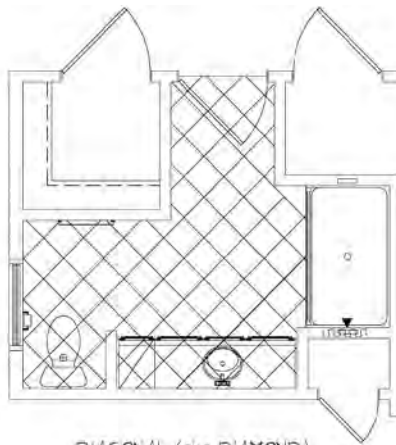


#381 Bright White

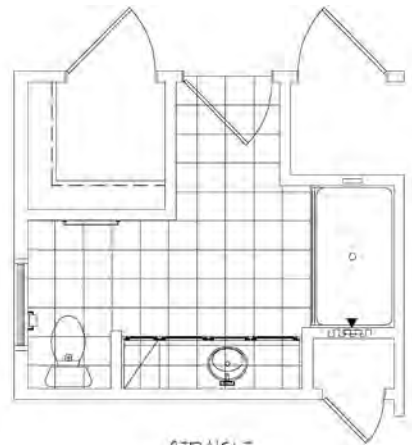
## Tile Pattern Terminology



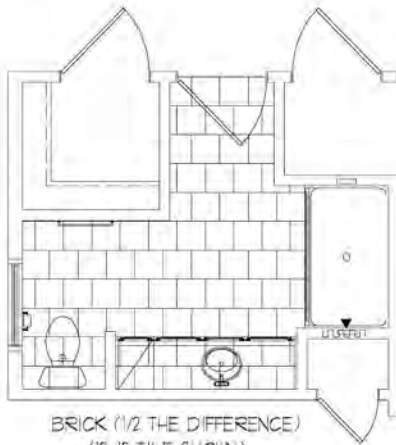
STAGGERED (1/3 THE LENGTH)  
(12x24 TILE SHOWN)



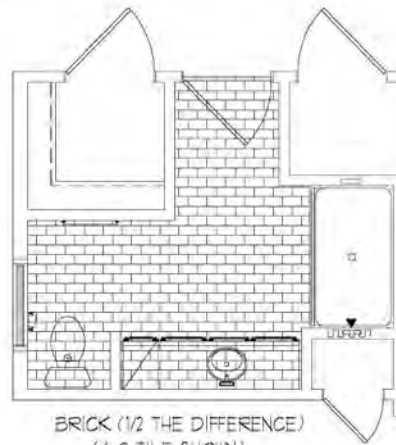
DIAGONAL (aka DIAMOND)  
(12x12 TILE SHOWN)



STRAIGHT  
(12x12 TILE SHOWN)



BRICK (1/2 THE DIFFERENCE)  
(12x12 TILE SHOWN)



BRICK (1/2 THE DIFFERENCE)  
(4x8 TILE SHOWN)